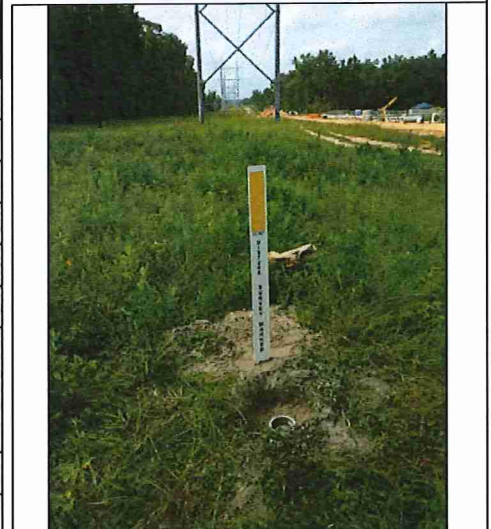
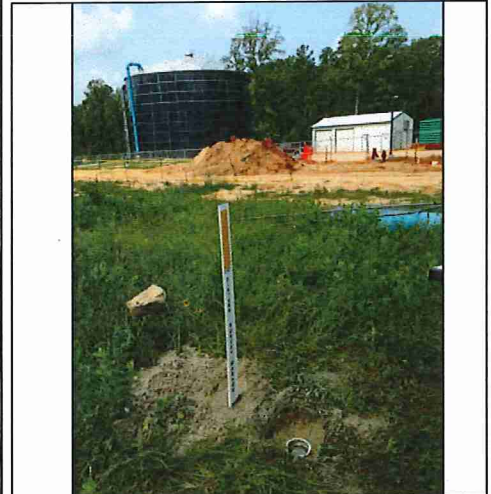




**ENGINEERING**  
**CITY OF CONROE**  
 300 W. Davis P.O. Box 3066  
 Conroe, Texas 77305 (936) 522-3130



CC-26AZ RESET	COUNTY: MONTGOMERY
NORTHING	EASTING
GRID: 10140634.11	GRID: 3815064.41
SURFACE: 10140635.54	SURFACE: 3815063.77
SCALE FACTOR: 0.99993876	ELEVATION: 366.46
DATUMS: NAD83 (2011) CENTRAL/NAVD88-91	
DESCRIPTION: SET ALUMINUM DISC IN CONCRETE SOUTH OF INTERSECTION OF F.M. 830 AND OLD MONTGOMERY ROAD ALONG THE CENTER OF THE ELECTRIC TRANSMISSION LINE 913'. (STAMPED CITY OF CONROE-CAPITAL PROJECTS)	
DATE ESTABLISHED: 07-22-2014	
BEARING TO CC-26 AZ_ADJ: N 0°37'43" W 994.70' SURFACE	



# Benchmark No. 12 Azimuth

*★ DESTROYED AND RESET - SEE CC-26A2 RESET DATA SHEET ★*

**General Location:** ±1,000 feet southeast of the intersection of Old Montgomery Road and FM 830 on the southwest side of FM 830

Latitude: 30° 23' 47.33932"  
Longitude: 95° 30' 47.41044"  
Grid Northing: 10,140,853.81  
Grid Easting: 3,815,759.17  
Surface Northing: 10,141,231.68  
Surface Easting: 3,815,901.35

Texas Coordinate System of 1983 (NAD83, CORS)  
Central Zone (4203)

Elevation: 371.90 Project Datum

Mark Logo: City of Conroe Capital Projects  
Designation: CC-26\_AZ  
Fnd 3" Aluminum Disk in Conc. Stamped "CC-26\_AZ"

Project Datum is based on a call elevation of 212.00 at S.J.R.A. G.R.P. BM#5 being a 3" brass disk in conc. with a mark logo "City of Houston SJRA 1972" stamped "D-1 D-3" located at the Lake Conroe gauging station pier on the dam structure.

Combined Factor: 0.9999627395  
Surface = Grid / Combined Factor  
Units of Measure: U.S. Survey Foot

## Detail Sketch:

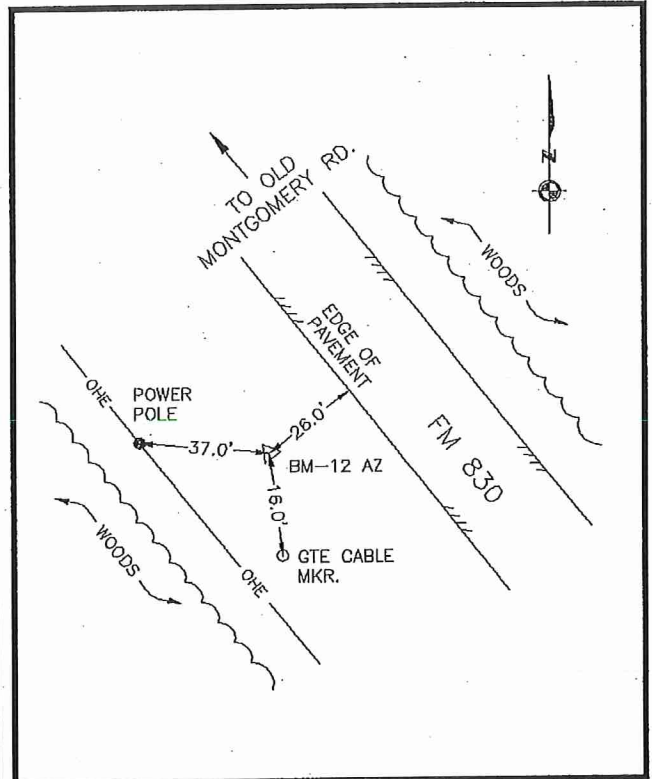


Photo 1-Station Detail:

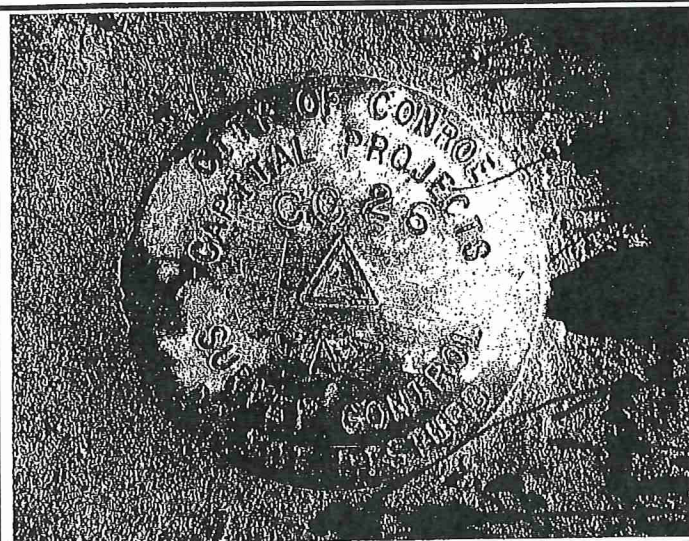


Photo 2-Station Area Picture:

