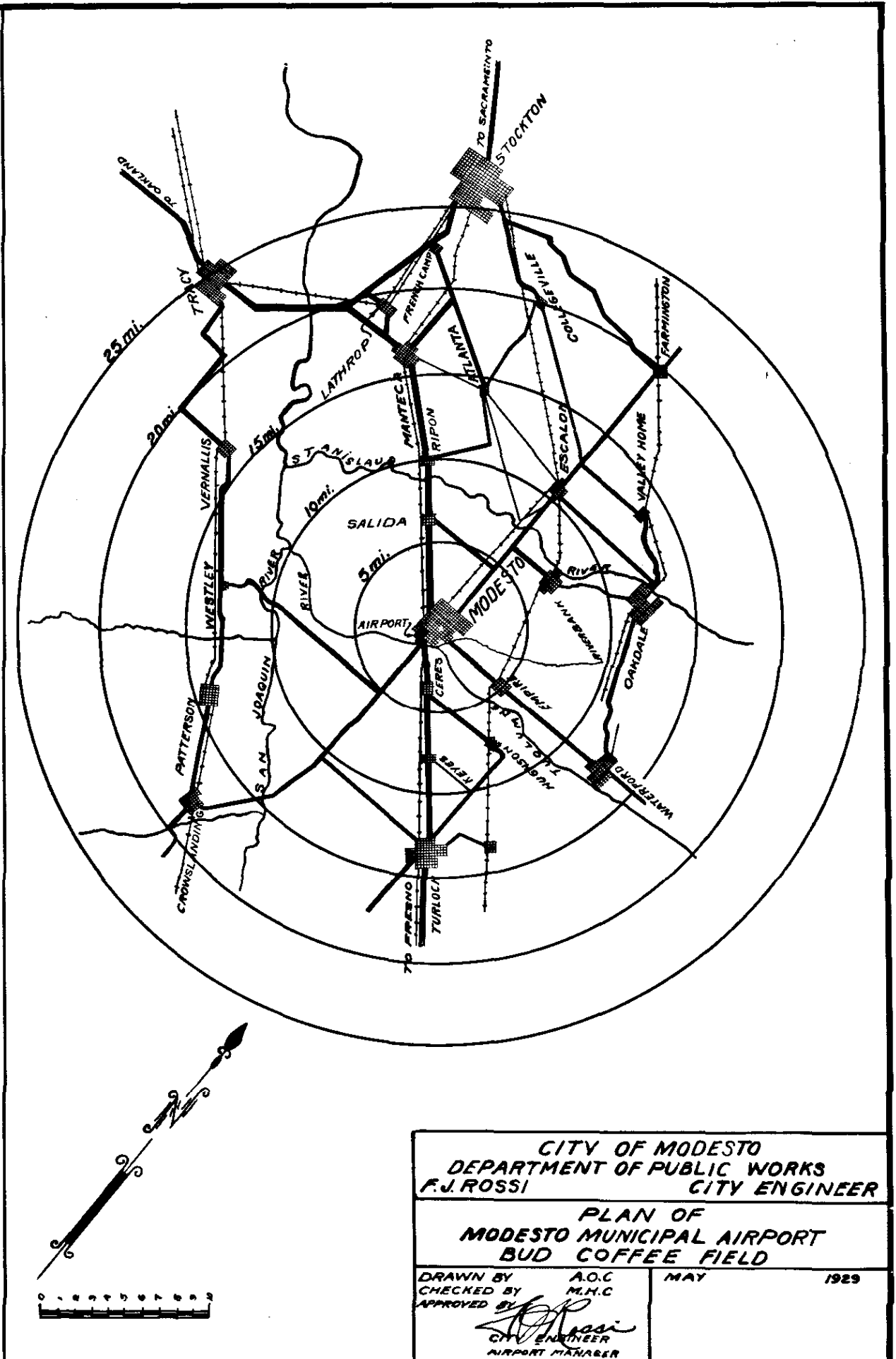
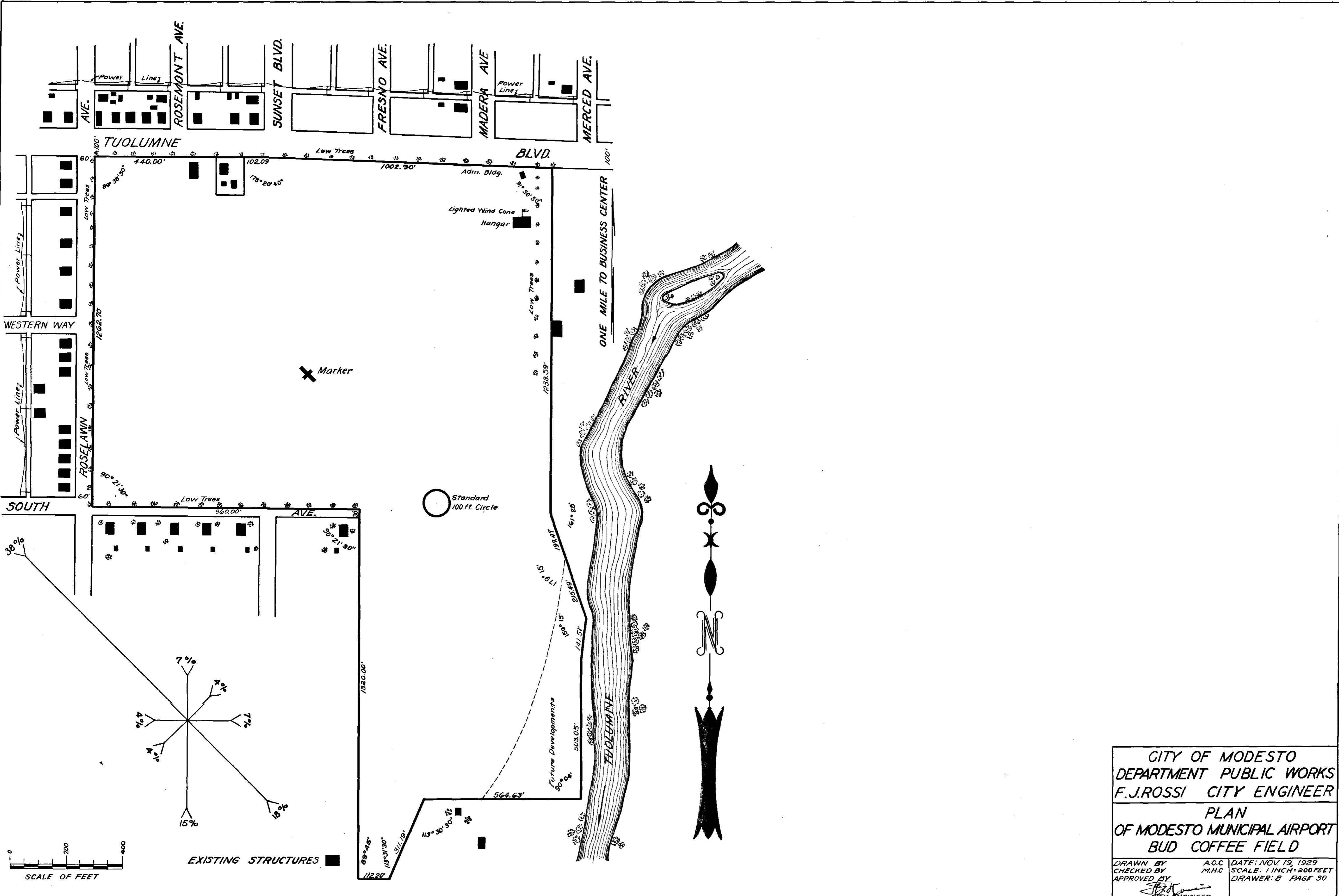


Map showing relative location of Modesto, California Municipal Airport to the business Center.  
 Estimated Population 14,000.  
 Elevation 90 ft.



CITY OF MODESTO DEPARTMENT OF PUBLIC WORKS F.J. ROSSI CITY ENGINEER	
PLAN OF MODESTO MUNICIPAL AIRPORT BUD COFFEE FIELD	
DRAWN BY A.O.C.	MAY 1929
CHECKED BY M.H.C.	
APPROVED BY <i>F.J. Rossi</i> CITY ENGINEER AIRPORT MANAGER	

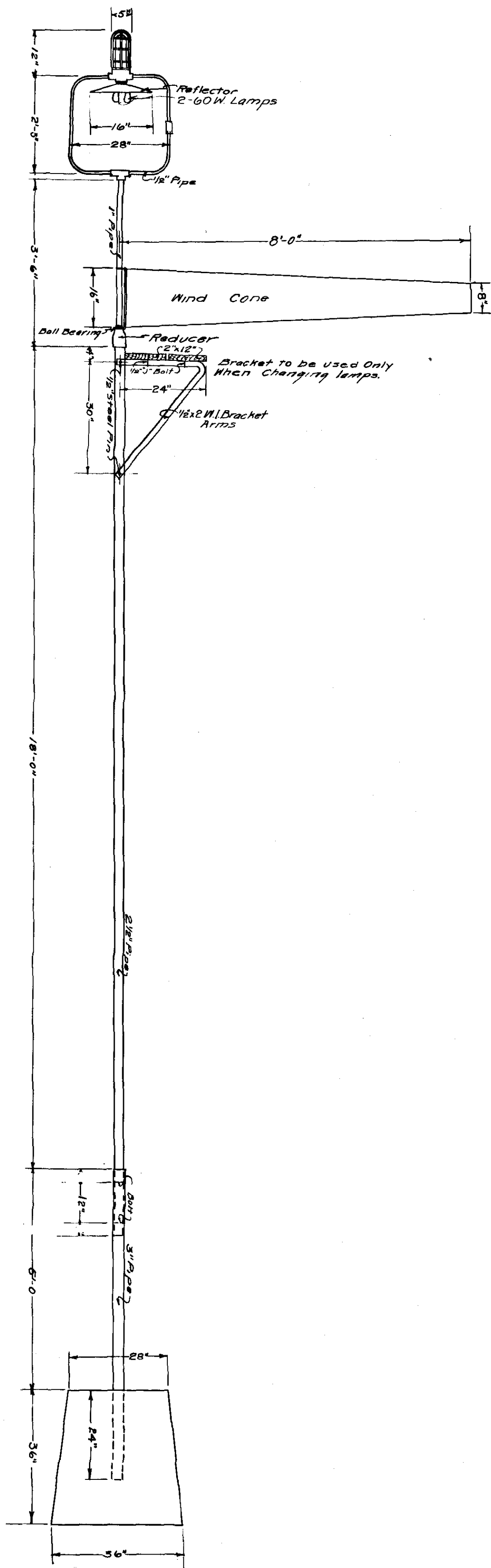


CITY OF MODESTO  
 DEPARTMENT PUBLIC WORKS  
 F.J. ROSSI CITY ENGINEER

PLAN  
 OF MODESTO MUNICIPAL AIRPORT  
 BUD COFFEE FIELD

DRAWN BY	A.O.C.	DATE: NOV. 19, 1929
CHECKED BY	M.H.C.	SCALE: 1 INCH = 200 FEET
APPROVED BY	<i>[Signature]</i>	DRAWER: B PAGE 30
	CITY ENGINEER	

17 - C - 57



WIND CONE  
 ERECTED AT AVIATION FIELD  
 1927  
 Scale 1/2"-1'-0"