

SONORA (458)

California

J. B. Lippincott, 1896

Third Order

Adjusted Elevations Based
On Sea Level Datum of 1929



Book: 5290

Latitude 37°45' Longitude 120°15'

FROM POINT NEAR MIDDLE OF EAST BORDER OF COPPEROPOLIS QUADRANGLE
NORTHEAST ALONG HIGHWAYS THROUGH SONORA INTO COLUMBIA QUADRANGLE.

Note: USC&GS first-order line, Salida to Bishop in 1932 follows same route.

Goodwin's ranch, 1.0 mi. E. of house, 6.0 mi. W. of Jamestown, on N. side of rd., standard iron post with bronze cap stamped "1389" (Reported destroyed by C&GS in 1935) 1390.817

Goodwin's Wine Cellar, on N. step of, about 6.0 mi. W. of Jamestown and 3.5 mi. N. of Chinese Camp; copper plug stamped "1176" 1177.548

Jamestown, half a block W. of Sisson's Hotel, in front wall in E. end of brick building with iron doors and stone pavement on S. side of rd., standard tablet stamped "1403" (C&GS Tie) 1404.170

Sonora, in S. post of E. entrance in street wall of courthouse; standard tablet stamped "1825" (C&GS Tie) *FOUND REPLACEMENT 4-20-05 (1754262)* 1826.046

Sonora, on E. edge of court of Victoria Hotel, facing Washington Street, in outside wall 1 ft. S. of gate copper bolt stamped "1794" 1795.319

Sonora, 3.4 mi. E. of Sonora Inn, along State Hwy. 108, 32 ft. E. of center of rd. to Phoenix Lake, 20 ft. N. of center of hwy., 1 ft. S. of property-line fence; standard iron post with bronze cap originally stamped "2144" (Recovered by C&GS in 1935 and restamped "2146.347 2", reported that the cap was sunk in the center.) 2146.347

2/27/61 ds *la*

SONORA (458)

California

E. B. Steele, 1940

G. W. Moore, 1945

Third Order

Adjusted Elevations Based
On Sea Level Datum of 1929

Book: B 8876

Latitude 37°45' Longitude 120°15'

FROM POINT NEAR KEYSTONE IN COPPEROPOLIS QUADRANGLE SOUTHEAST AND
SOUTH ALONG STATE HIGHWAY 49 INTO MERCED FALLS QUADRANGLE

La Grange, 14.6 mi. N. of P.O., 5.1 mi. SW. of Chinese Camp, 0.7 mi.
E. of X-ing. of RR. and State Hwy. 49, 29 ft. S. of center of rd., 7 ft.
SW. of large high boulder, on top of low ridge, on top of boulder in
place; chiseled square 1143.12

La Grange, 13.6 mi. N. of P.O., 4.1 mi. SW. of Chinese Camp, on N.
side of Y-rd. fork, 12 ft. E. of front gate entrance to two-story
farmhouse, 4 ft. S. of fence, in top of rock outcrop; standard tablet
stamped "1 RS 1940 1207" 1207.258

Reference mark, 41 ft. W. of tablet, 31 ft. N. of center of rd., in
root on S. side of large oak tree; copper nail and washer 1205.68

La Grange, 12.6 mi. N. of, 0.1 mi. S. of X-ing. of old RR. grade and
hwy., 21 ft. E. of center of rd., 4.5 ft. E. of fence, in base on N.
side of 6 in. oak tree; copper nail and washer 1232.15

La Grange, 11.6 mi. N. of, 0.5 mi. N. of X-ing. of Sierra RR. and hwy.,
90 ft. W. of center of hwy., 60 ft. E. of old rd., in top of rock out-
crop; standard tablet stamped "2 RS 1940 1177" 1176.623 ✓

Reference mark, 89 ft. NW. of tablet, 105 ft. W. of center of hwy., in
base on S. side of 8 in. oak tree; copper nail and washer 1178.18

La Grange, 11.1 mi. N. of, at X-ing. of Sierra RR. and hwy., top of
N. rail 1154.1

La Grange, 10.6 mi. N. of, 0.5 mi. S. of X-ing. of Sierra RR. and
hwy., 22 ft. W. of center of hwy., in bottom of wide draw, on top of
boulder set in ground; chiseled square 1182.87

La Grange, 9.6 mi. N. of P.O., 0.25 mi. S. of ranch house, 37 ft. E.
center line of hwy., among a bunch of high boulders, in top of
boulder 2 1/2 ft. high; standard tablet stamped "3 RS 1940 1071" 1070.339

Reference mark, 34 ft. SE. of tablet in base, N. side of oak
tree; copper nail and washer 1069.36

La Grange, 8.7 mi. N. of P.O., 11 ft. SW. of center of hwy., in center
on top of N. end of SW. head wall of culvert under hwy., chiseled square
metal tag stamped "1017.2" 1016.99

2/27/61 ds *ds*

Third Order

Adjusted Elevations Based
On Sea Level Datum of 1929

Book: B 8876

Latitude 37°45' Longitude 120°15'

FROM SOUTHWEST CORNER OF TUOLUMNE QUADRANGLE NORTHWEST ALONG STATE
HIGHWAY 49 TO POINT 2.0 MILES EAST OF JACKSONVILLE.Note: This line follows a portion of C&GS second-order line, Yosemite
Junction to 4.0 mi. S. of Mono Lake in 1935.

Coulterville, 5.8 mi. NW. of P.O., along State Hwy. 49, 1.2 mi. NW. of
rd. summit, 105 ft. SW. of forks of rd. to McAlpine Mine, 80 ft. S.
of center of hwy., at saddle in spur of ridge, in mass of concrete in
top of rock outcrop; standard tablet stamped "21 RS 1940 1879" 1878.494

Reference mark, 179 ft. NE. of tablet, 85 ft. N. of forks of rd. to
McAlpine Mine, 12 ft. E. of center of rd. N., on top of boulder in
place; chiseled square 1882.25

Coulterville, 6.7 mi. NW. of along hwy., in NW. angle of Y-rd. fork,
19 ft. SW. of center of hwy., on top of large red boulder; chiseled
square 1529.14

Coulterville, 7.6 mi. NW. of along hwy., at foot of long grade, center
of bridge over Jackass Creek; floor elevation 1175.1

Coulterville, 8.1 mi. NW. of along hwy., 2.1 mi. NE. of Moccasin Dam,
300 ft. SE. of Y-rd. fork, 43 ft. SW. of center of hwy., in top of
large boulder; standard tablet stamped "22 RS 1940 1186" 1185.548

Reference mark, 94 ft. NE. of tablet, 23 ft. E. of center of hwy., in
root on W. side of 18 in. oak tree; copper nail and washer 1187.36

Coulterville, 9.1 mi. NW. of along hwy., 1.1 mi. SE. of Moccasin
Creek Powerhouse, at NW. cor. of hwy. bridge over Moccasin Creek,
on top of N. end of W. concrete pier; chiseled square 1021.46

Coulterville, 10.1 mi. NW. of along hwy., at Moccasin Creek Powerhouse,
in SW. end of small concrete dam across Moccasin Creek; standard tablet
stamped "23 RS 1940 935" 934.579

Reference mark, 310 ft. NW. of tablet, on NE. side of hwy., in base on
W. side of 24 in. pine tree; copper nail and washer 921.07

Third Order

Adjusted Elevations Based
On Sea Level Datum of 1929

Book: B 8876

FILE COPY

- (3) Moccasin Creek Powerhouse, in top of S. wing of concrete spillway of main dam; metal tablet stamped "San Francisco H H W S ELEV. 926.990" *POUND 4-20-05 Also "LINE" nearby* *HS0248* 929.03
- Moccasin Creek Powerhouse, in top of N. wing of concrete spillway of main dam; metal tablet stamped "San Francisco H H W S ELEV. 927.004" 929.05
- Moccasin Creek Powerhouse, 1.0 mi. NW. of, 4.5 mi. SE. of Jacksonville, 53 ft. N. of center of hwy., in base on S. side of 8 in. oak tree; copper nail and washer 866.32
- Jacksonville, 3.7 mi. SE. of along hwy., 1.8 mi. NW. of Moccasin Creek Powerhouse, 43 ft. NE. of center of and at small cut in hwy., on rocky point in top of boulder in place and projecting 1 ft. above ground; standard tablet stamped "24 RS 1940 800" *Under Lake Dam Pond* 799.728
- Reference mark, 105 ft. SW. of tablet, on SW. side of hwy., in base on NW. side of 16 in. oak tree; copper nail and washer 796.49
- Jacksonville, 2.5 mi. SE. of along State Hwy. 120, in SE. angle of jct. of State Hwy. 49 and 120, at SW. cor. of bridge, on top of concrete guardrail; chiseled square 682.51

Third Order

Adjusted Elevations Based
On Sea Level Datum of 1929

Book: V 204

COPY

Latitude 37°45' Longitude 120°15'

POINT NEAR HETCH HETCHY RAILROAD JUNCTION SOUTHEAST AND NORTHEAST
ALONG SIERRA RAILROAD TO POINT 2.0 MILES SOUTHEAST OF JACKSONVILLE

La Grange, 11.1 mi. N. of P.O., at X-ing. of Sierra RR. and hwy.,
center of hwy., top of N. rail 1154.1

La Grange, 11.1 mi. N., thence 0.5 mi. E. from, 60 ft. N. of Sierra
RR. tracks, 120 ft. NE. of RR. trestle over drain, 4 ft. higher than
track, in base on S. side of 20 in. leaning oak tree; copper nail and
washer painted "1118.6" 1118.30

La Grange, 11.1 mi. N., thence 1.5 mi. E. from, opposite power line
tower, at point where Sierra RR. curves close to power line, 700 ft.
W. of rd. X-ing., 17 ft. N. of RR. tracks, 2.7 ft. higher than tracks,
in projecting rock outcrop near ground level; standard tablet stamped
"36 GWM 1945 1063" 1062.346 ✓

Reference mark, 52 ft. S. of tablet, 35 ft. S. of RR., 5 ft. lower than
track, in base on SE. side of 14 in. oak tree; copper nail and washer 1055.61

La Grange, 11.1 mi. N., thence 2.5 mi. E. from, 35 ft. S. of and 4 ft.
lower than tracks, in base on NW. side of 20 in. oak tree; rail spike
painted white, tree painted "936.8" 936.48

La Grange, 11.1 mi. N., thence 2.8 mi. E. from, 30 ft. E. of RR.
X-ing., 4.5 ft. S. of center line of RR. tracks on SW. cor. of concrete
cattleguard; chiseled square painted "1009.7" 1009.39

La Grange, 11.1 mi. N., thence 3.4 mi. E. from, 77 ft. S. of X-ing. of
RR. and rd., 10 ft. higher than RR. tracks, at steel power line tower
in W. concrete base; standard tablet stamped "37 GWM 1945 1003" 1002.710 ✓

Reference mark, 74 ft. NW. of tablet, 90 ft. W. of X-ing. of RR. and
rd., on SE. cor. of concrete cattleguard; chiseled square 995.38

La Grange, 11.1 mi. N., thence 4.4 mi. E. from, along Sierra RR., 65
ft. E. of and 4 ft. lower than main RR. track opposite rd. X-ing., at
fall gaging house over syphon, center of concrete platform; San Fran-
cisco H H W S tablet stamped "Sta 323+60 El 797.135 No. 799.6" and
tagged "799.6" 799.307

Reference mark, 75 ft. NW. of tablet, 25 ft. E. of main RR. track, top
center of 5 in. steel rod 800.00

Third Order

Adjusted Elevations Based
On Sea Level Datum of 1929

Book: V 204

FILE COPY

La Grange, 11.1 mi. N., thence 5.6 mi. E. from along Sierra RR., at
new RR. bridge over Sixbit Gulch, in SE. side of NE. concrete abutment,
standard tablet stamped "38 GWM 1945 617" 616.694

Reference mark, 583 ft. SW. of tablet, on E. side of S. concrete
abutment of RR. bridge over Sixbit Gulch; top of metal rivet within
chiseled square 616.65

La Grange, 11.1 mi. N., thence 6.7 mi. NE. from, 666 ft. S. of Sierra
RR., milepost 8, 9 ft. W. of RR. tracks, on rock bluff; chiseled
square painted "628.8" 628.53

La Grange, 11.1 mi. N., thence 7.6 mi. NE. from, 660 ft. SW. of
Sierra RR., milepost 9, on NE. side of small draw, 11 ft. NW.
of and 2 ft. higher than tracks, on rock outcrop; chiseled square
painted "630.4" 630.05

La Grange, 11.1 mi. N., thence 8.1 mi. NE. from, along Sierra RR.,
at steel RR. bridge over Tuolumne River, in N. parapet wall of E.
concrete abutment; standard tablet stamped "39 GWM 1945 628" 627.770

Reference mark, 342 ft. W. of tablet, at steel bridge over Tuolumne
River, on N. parapet wall of W. concrete abutment; top of metal bolt
within chiseled square 627.78

La Grange, 11.1 mi. N., thence 9.0 mi. NE. from, along RR., on W.
side of trail X-ing., on SE. cor. of concrete cattleguard; chiseled
square painted "666.0" 665.67

La Grange, 11.1 mi. N., thence 10.0 mi. NE. from, 705 ft. E. of Sierra
RR., milepost 11, on W. side of trail X-ing., on NE. cor. of concrete
cattleguard 11 D; chiseled square painted "674.6" 674.32

Jacksonville, 2.2 mi. SE. of along State Hwy. 120, center of steel hwy.
bridge over Tuolumne River; pavement 670.71

SONORA (458)

California

G. W. Moore, 1945

Third Order

Adjusted Elevations Based
On Sea Level Datum of 1929

Book: V 204

FILE COPY

Latitude 37°45' Longitude 120°15'

FROM TUOLUMNE QUADRANGLE ALONG ROADS GENERALLY SOUTHWEST AND SOUTHEAST
TO BIGOAK FLAT, NEAR EAST BORDER OF QUADRANGLE

Tuolumne, 1.8 mi. S. of, at top of hill, 68 ft. S. of rd. in top of rock outcrop; standard tablet stamped "29 GWM 1945 2678"	2677.366
Reference mark, 150 ft. W. of tablet, 58 ft. S. of rd., on top of boulder; chiseled square	2666.86
Tuolumne, 2.6 mi. S. of, 55 ft. E. of T-rd. NE. on top of S. head wall of concrete culvert; chiseled square painted "2702.5"	2702.21
Tuolumne, 3.6 mi. S. of, on grade, 24 ft. E. of rd., 30 ft. S. of gate, in field, on top of boulder; chiseled square painted "2485.3"	2485.02
Tuolumne, 4.1 mi. S. of, 28 ft. E. of rd., at group of large boulders, in top of boulder; standard tablet stamped "30 GWM 1945 2383"	2383.212
Reference mark, 160 ft. S. of tablet, 23 ft. E. of rd. on top of boulder; chiseled square	2380.31
Tuolumne, 4.8 mi. S. of, at top of hill, 30 ft. SE. of rd., in root on S. side of 30 in. oak tree; copper nail and washer painted "2351.4"	2351.22
Tuolumne, 5.8 mi. S. of, 65 ft. NE. of center of rd. E., 25 ft. E. of N. apex of triangle of rd. fork, in root on E. side of 25 in. oak tree; copper nail and washer painted "2076.9"	2076.70
Tuolumne, 6.7 mi. S. of, 40 ft. NE. of fork of rd. W. to Jamestown, 30 ft. W. of gate to Riverhills ranch in rock outcrop; standard tablet stamped "31 GWM 1945 2037"	2037.095
Reference mark, 140 ft. SE. of tablet, 25 ft. S. of rd., on rock outcrop; chiseled square	2037.09
Tuolumne, 7.7 mi. S. of, at top of steep grade, 15 ft. E. of rd., 12 ft. W. of fence cor., on top of boulder; chiseled square painted "1687.8"	1687.59
Tuolumne, 8.8 mi. S. of, at prominent U-bend at change from W. to E., 120 ft. NW. of rd., on projecting rock ridge, in rock outcrop; standard tablet stamped "32 GWM 1945 1239"	1238.884
Reference mark, 120 ft. SE. of tablet, 20 ft. N. of rd. at U-bend, at rd. level, beside fence, on top of boulder; chiseled square	1241.23

Third Order

Adjusted Elevations Based
On Sea Level Datum of 1929

Book: V 204



Tuolumne, 9.8 mi. S. of, at Ward's Ferry Bridge over Tuolumne River,
at SE. cor. of steel bridge, on top of concrete retaining wall;
chiseled square painted "815.8" 815.58

Tuolumne, 10.1 mi. S. of, 35 ft. N. of N. end of steel bridge over
Deer Creek, 25 ft. NE. of rd. at curve, 3 ft. N. of water trough, in
top of rock outcrop; standard tablet stamped "33 GWM 1945 1322" 1321.345

Reference mark, 95 ft. S. of tablet, on S. end of E. concrete guard-
rail of steel bridge over Deer Creek; chiseled square 1317.49

Tuolumne, 11.6 mi. S. of, 25 ft. W. of rd. at U-bend from W. to E.,
in root on N. side of 30 in. oak tree; copper nail and washer painted
"1470.1" 1469.94

Tuolumne, 12.6 mi. S. of, on grade, 8 ft. NE. of rd., in base on SW. side
of 12 in. oak tree; rail spike painted white painted "1895.3" 1895.11

Tuolumne, 13.3 mi. S. of, 20 ft. SE. of rd., 25 ft. S. of fork across
large drain, in rock outcrop; standard tablet stamped "34 GWM 1945
2029" 2029.150

Reference mark, 55 ft. N. of tablet, 6 ft. W. of rd., on rock out-
crop; chiseled square 2029.99

Tuolumne, 14.5 mi. S. of, at drain between two rocky points, 20 ft.
NE. of and 4 ft. higher than rd., on top of rock outcrop; chiseled
square painted "2372.3" 2372.11

Tuolumne, 15.4 mi. S. of, 2.2 mi. N. of Bigoak Flat, 600 ft. N. of fork
of rd. E., 50 ft. W. of rd., 9 ft. W. of shed, in rock outcrop; stand-
ard tablet "35 GWM 1945 2579" 2578.935

Reference mark, 55 ft. S. of tablet, 31 ft. W. of rd., on top of
boulder; chiseled square 2578.01

Tuolumne, 16.2 mi. S. of, 75 ft. S. of center of triangle of rd. forks,
18 ft. SE. of rd., in root 2 ft. NW. of trunk of 30 in. locust tree;
copper nail and washer, painted "2729.7" 2729.52

Center of pavement; in saddle at top of ridge 3067.1

Tuolumne, 17.2 mi. S. of, 0.4 mi. N. of Bigoak Flat, 70 ft. N. of
rd. fork, 9 ft. W. of paved rd., in base on E. side of 10 in. pine
tree; rail spike painted white, painted "2917.6" 2917.43

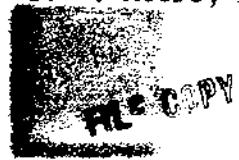
SONORA (458)

California

G. W. Moore, 1945

Third Order

Adjusted Elevations Based
On Sea Level Datum of 1929



Book: V 204

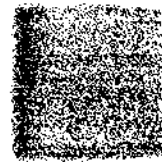
(5) USC&GS standard disk stamped "C 219 1935"

H50969
2802.885

Reference mark, 104 ft. E. of disk at W. end of S. head wall of
concrete culvert; chiseled square

2804.09

Page 3 of 3



2/28/61 ds

SONORA (458)

California

G. W. Moore, 1945

Third Order

Tentative Adjusted Elevations
Based on Sea Level Datum of 1929

Book: V 204

Latitude 37°45' Longitude 120°15'



MONUMENT POINT 2.0 MILES EAST OF JACKSONVILLE WEST ALONG STATE HIGHWAY
120 TO JACKSONVILLE.

Note: This line follows a portion of USC&GS second order line, Yosemite
Junction to 4.0 mi. S. of Mono Lake, 1935.

USC&GS standard disk stamped "X 218 1935"

165 0932 - under
label
655.625

Center of concrete bridge; pavement

644.6

Jacksonville, 0.9 mi. E. of, 0.2 mi. W. of concrete bridge, 24 ft.
S. of State Hwy. 120, 12 ft. W. of pine tree, on top of boulder;
chiseled square, painted "640.5"

640.48

USC&GS standard disk stamped "W 218 1935"

641.085
165 0930 - under
label

Reference mark, 93 ft. SE. of disk, 26 ft. S. of hwy., on SE. cor.
of retaining wall; chiseled square

637.84

2/28/61 ds ← cc

