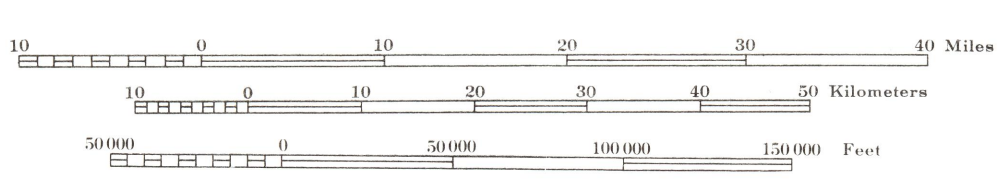


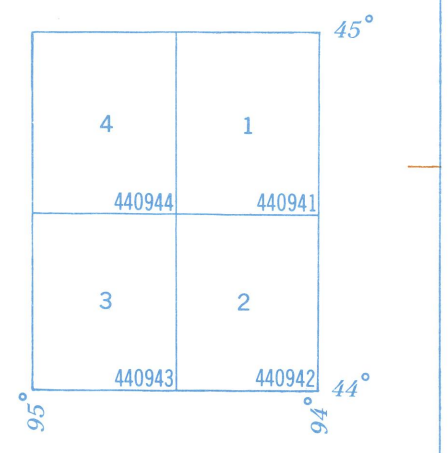
STATE OF MINNESOTA
 (SOUTHERN SECTION)
 TRIANGULATION DIAGRAM
 U.S. DEPARTMENT OF COMMERCE
 NATIONAL OCEANIC AND ATMOSPHERIC ADMINISTRATION
 NATIONAL GEODETIC NETWORK
 WASHINGTON, D. C.
 November 1971



Additional triangulation and traverse along the Mississippi River will be found in the publication "Triangulation along the Mississippi River, Cairo, Illinois to Headquarters" by the Corps of Engineers, U. S. Army.
 Copies of these publications may be procured from Army Topographic Command, 6500 Brooks Lane, Washington, D. C. 20315.

- HORIZONTAL CONTROL**
- Monumented Point or Locust Obelisk
 - Station reported but not recovered
 - Measured Base - Electronic or Tapes
 - Line of triangulation observed
 - Measured Length - Electronic or Tapes

Each 30 minute quadrangle (shown in blue) is identified in the southeast corner by a six digit number showing successively degrees of latitude, degrees of longitude, and position in its one degree quadrangle.



Note: Data may be requested by quadrangle, county, or other unit. Since publication of data in quadrangle units may not be complete for this State, requests for information by quadrangle number will be supplied with data in whatever form is available.

BASE MAP BY
 UNITED STATES
 DEPARTMENT OF THE INTERIOR
 GEOLOGICAL SURVEY

SOUTHERN MINNESOTA

SOUTHERN MINNESOTA