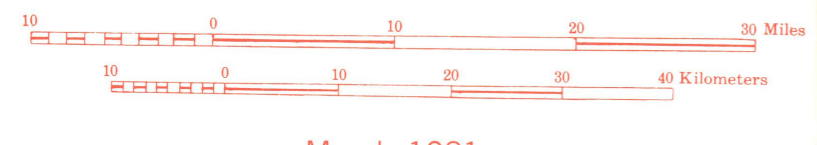


U.S. DEPARTMENT OF COMMERCE  
 NATIONAL OCEANIC AND ATMOSPHERIC ADMINISTRATION  
 NATIONAL OCEAN SURVEY  
 WASHINGTON, D.C.  
 INDEX MAP - CONTROL LEVELING  
**STATE OF MONTANA**  
 (WESTERN SECTION)



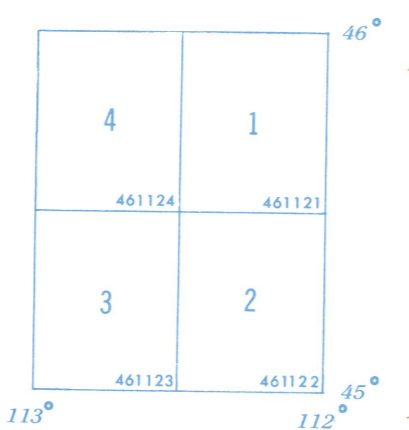
March 1981

— First-Order Lines  
 - - - Second-Order Lines

Information may be obtained from the  
 Director, National Geodetic Information Center  
 National Ocean Survey, N.O.S.A., Rockville, Md. 20852

Data may be requested by quadrangle.  
 Publication of data in quadrangle units is  
 complete for this State.

Each 30 minute quadrangle (shown in blue)  
 is identified in the southeast corner by a six  
 digit number showing successive degrees of  
 latitude, degrees of longitude, and position in  
 its one degree quadrangle.



BASE MAP  
 BY  
 UNITED STATES  
 DEPARTMENT OF THE INTERIOR  
 GEOLOGICAL SURVEY