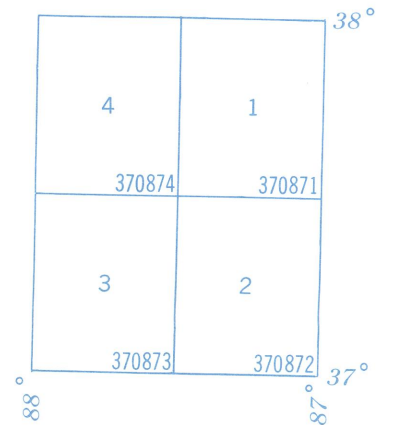


U.S. DEPARTMENT OF COMMERCE
 NATIONAL OCEANIC AND ATMOSPHERIC ADMINISTRATION
 NATIONAL GEODETIC NETWORK
 WASHINGTON, D.C.
 February 1973
 INDEX MAP - CONTROL LEVELING
 STATE OF KENTUCKY



Each 30 minute quadrangle (shown in blue) is identified in the southeast corner by a six digit number showing successively degrees of latitude, degrees of longitude, and position in its one degree quadrangle.

Note: Data may be requested by quadrangle, county, or other unit. Since publication of this State requests for information by quadrangle number will be supplied with data in whatever form is available.

— First-Order
 - - - Second-Order

Information may be obtained from the Director, National Geodetic Survey Information Center, National Ocean Survey, N.O.S.A., Rockville, Md. 20852

