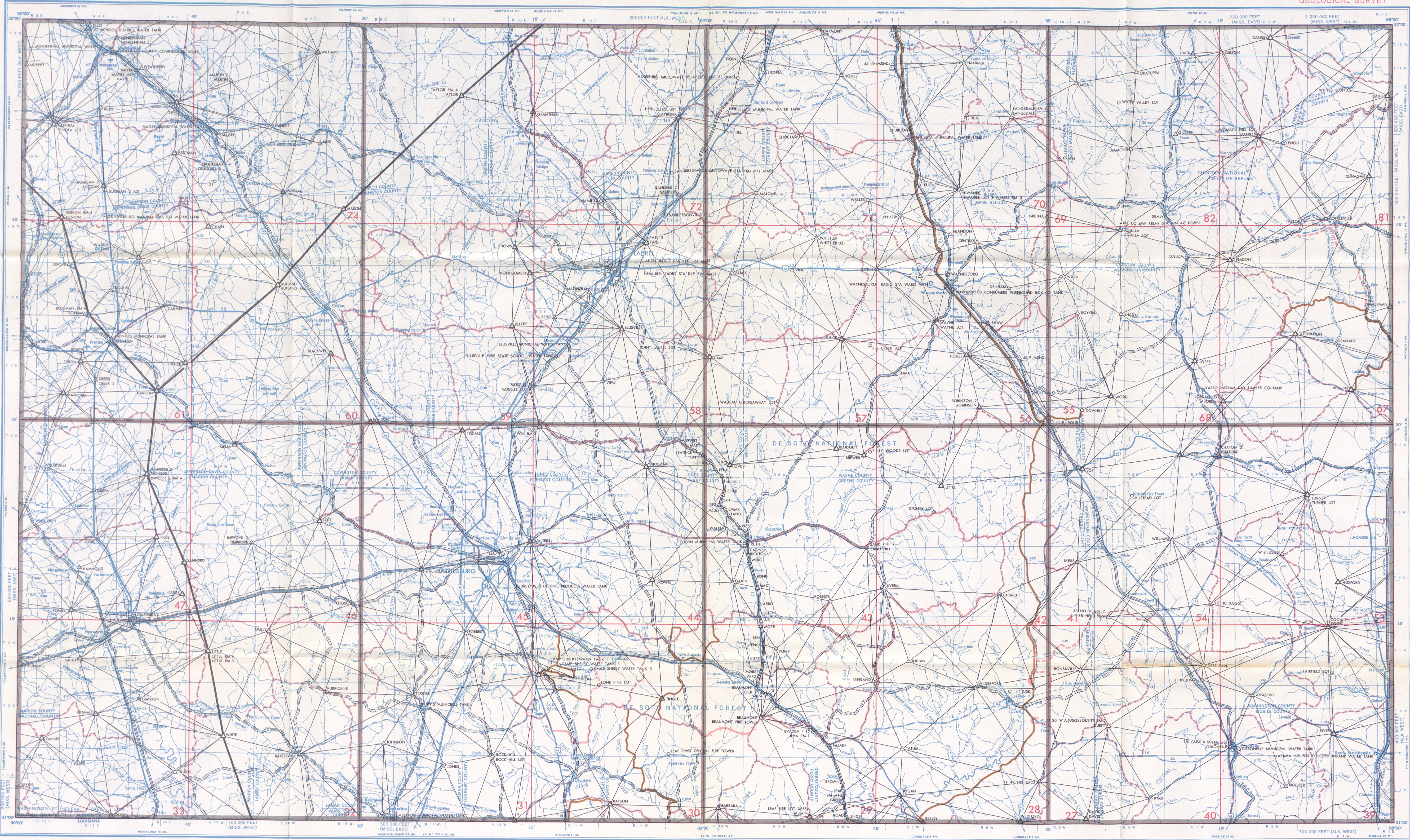


GEODETIC CONTROL DIAGRAM



HATTIESBURG, MISS., ALA., LA. (NH 16-1)
SEPTEMBER 1971

Base prepared by the U. S. Army Topographic Command (AJEE), Washington, D. C. Compiled in 1964 by photogrammetric methods. Horizontal and vertical control by USGS and USC&GS. Aerial photography 1952. Photography field annotated 1953. Limited revision by U. S. Geological Survey 1964.

100,000-FOOT PLANE COORDINATE GRID TICK SYMBOLS
MISSISSIPPI EAST MISSISSIPPI WEST ALABAMA WEST MISSISSIPPI EAST ALABAMA WEST

INDEX TO COUNTY BOUNDARIES
(See county designations list for county identification)

PLANE COORDINATE ZONES
MISSISSIPPI EAST MISSISSIPPI WEST ALABAMA WEST MISSISSIPPI EAST ALABAMA WEST

HORIZONTAL CONTROL

Coast & Geodetic Survey: Monumented Point - First Order (triangle), Monumented Point - Second Order (triangle), Monumented Point - Third Order (triangle), Located Object - Third Order (circle), Station reported not recovered (circle), Measured Base - Electro Optical or Taped (line), Line of triangulation observed from one end only (line), Measured Length - Electronic or Taped (line), Theodolite Traverse - Electronic Distance (line), Transit Traverse - Taped Distance Third Order (line), Transit Traverse and Leveling Third Order (line)

Geological Survey: (triangle), (circle)

Other Agencies: (triangle), (circle)

VERTICAL CONTROL

Coast & Geodetic Survey: First Order (line), Second Order (line), Third Order (line)

STATE SURVEY CONTROL: Horizontal or Vertical (line)

CODE OF OTHER AGENCIES: U. S. Army Topographic Command (line), Geodetic control established by other agencies, shown in brown, may be obtained from Geodesy Division, NOAA, Rockville, Maryland 20852 (line)

Scale 1:250,000
0 5 10 15 20 25 30 Statute Miles
0 5 10 15 20 25 30 Kilometers

SECTIONIZED TOWNSHIP
TOWNSHIP OR RANGE LINE
LAND GRANT BOUNDARY

TRANSVERSE MERCATOR PROJECTION
LOCATION DIAGRAM FOR NH-16-1

LEGEND ROAD DATA 1953
ROADS: Hard surface, heavy duty (line), More than two lanes wide (line), Two lanes wide, Federal route marker (line), More than two lanes wide (line), Two lanes wide, State route marker (line), Improved light duty (line), Unimproved dirt (line), Trail (line)

RAILROADS: Single track (line), Double or Multiple track (line), Standard gauge (line), Narrow gauge (line)

BOUNDARIES: International (line), State (line), County (line), Park or reservation (line)

LANDMARKS: School, Church, Other (line), Horizontal control point (line), Spot elevation in feet (line), Marsh or swamp (line), Intermittent or dry stream (line), Power line (line)

COAST AND GEODETIC SURVEY THIRTY MINUTE QUADRANGLE DESIGNATION

INDEX TO COUNTY BOUNDARIES

1	8	12	13	19	20
31 089 4	31 089 1	31 088 4	31 088 1		
7	9	11	14		
2	6	MISSISSIPPI	ALABAMA		
31 089 3	31 089 2	31 088 3	31 088 2		
4	5	10	15	16	17

ORDER CONTROL DATA, SHOWN IN BLACK OR BROWN, BY 30 MINUTE QUADRANGLE UNITS FROM GEODESY DIVISION, NOAA, ROCKVILLE, MARYLAND 20852.

GEOLOGICAL SURVEY FIFTEEN MINUTE QUADRANGLE DESIGNATION

INDEX TO COUNTY BOUNDARIES

1	8	12	13	19	20
31 089 4	31 089 1	31 088 4	31 088 1		
7	9	11	14		
2	6	MISSISSIPPI	ALABAMA		
31 089 3	31 089 2	31 088 3	31 088 2		
4	5	10	15	16	17

ORDER CONTROL DATA, SHOWN IN RED, BY 15 MINUTE QUADRANGLE UNITS FROM DIRECTOR, GEOLOGICAL SURVEY, WASHINGTON, D. C. 20242.

HATTIESBURG, MISS., ALA., LA. (NH 16-1)
SEPTEMBER 1971

JANUARY 1972 A 566

U. S. DEPARTMENT OF COMMERCE
 ENVIRONMENTAL SCIENCE SERVICES ADMIN.
 COAST AND GEODETIC SURVEY
 ROCKVILLE, MARYLAND 20852
 FORM - 6471 (2/68)
 DATE MAY 1972

INDEX TO NUMBERED HORIZONTAL CONTROL STATIONS

by the
 Coast and Geodetic Survey

PAGE 1
 QUADS 310881-2-3-4 & 310891-2-3-4
 ALA-LA-MISS
 LATITUDE 31°00' TO 32°00'
 LONGITUDE 88°00' TO 90°00'
 DIAGRAM NH 16-1 HATTIESBURG

KEY NO.	STATION NAME	QUAD NO.	STATION NO.
1	MILLS	310883	1022
1	C I 53 USE	310883	1023
2	SAMBO	310883	1028
3	BOX	310883	1043
4	WAYNESBORO MUNICIPAL WATER TANK	310884	1046
4	WAYNESBORO WELLS LAMONT INC WATER TANK	310884	1048
5	LAUREL	310891	1008
6	LAUREL MUNICIPAL WATER TANK	310891	1025
7	MASONITE CORP RADIO STATION KKI 662 MAST	310891	1030
8	CARNES	310892	1003
9	HATTIESBURG	310892	1010
9	BENCH MARK E 12	310892	1011
9	HATTIESBURG SOUTHERN TEACHERS COLLEGE DOME	310892	1038
10	MC LAURIN	310892	1016
11	CAMP SHELBY WATER TANK NO 2	310892	1028
12	CAMP SHELBY WATER TANK NO 4	310892	1030
13	HATTIESBURG COMPRESS CO WATER TANK	310892	1033
14	HATTIESBURG HERCULES POWDER CO TALLER STACK	310892	1034
14	HATTIESBURG HERCULES POWDER CO WATER TANK	310892	1035
15	HATTIESBURG MAIN STREET M E CH SOUTH CUPOLA	310892	1036
16	HATTIESBURG SOUTHERN TEACHERS COLLEGE STACK	310892	1039
17	BASSFIELD MUNICIPAL WATER TANK	310893	1029
18	COLUMBIA COURTHOUSE CLOCK TOWER	310893	1030
19	COLUMBIA RELIANCE MFG CO TANK	310893	1031
20	SANATORIUM	310894	1039
21	SARATOGA LOOKOUT TOWER	310894	1053
22	LAUREL COMPRESS CO WATER TANK	310891	1023
23	LAUREL MASONITE CO CONCRETE CHIMNEY	310891	1024
24	HATTIESBURG SHELBY AIRPORT TANK AND BEACON	310892	1037
25	MISSISSIPPI STATE SANATORIUM BLACK TANK	310894	1050
26	LAUREL RADIO STATION WAML MAST	310891	1029
27	LAUREL PINEHURST HOTEL WATER TANK	310891	1026
28	TIGER CREEK LOOKOUT TOWER	310883	1073
29	MISSISSIPPI STATE SANATORIUM STACK	310894	1051
30	LAMAR MAG STA	310892	1015
31	DIXIE	310892	1004
31	SUB BASE MARK A 485-3	310892	1005

KEY NO.	STATION NAME	QUAD NO.	STATION NO.
---------	--------------	----------	-------------