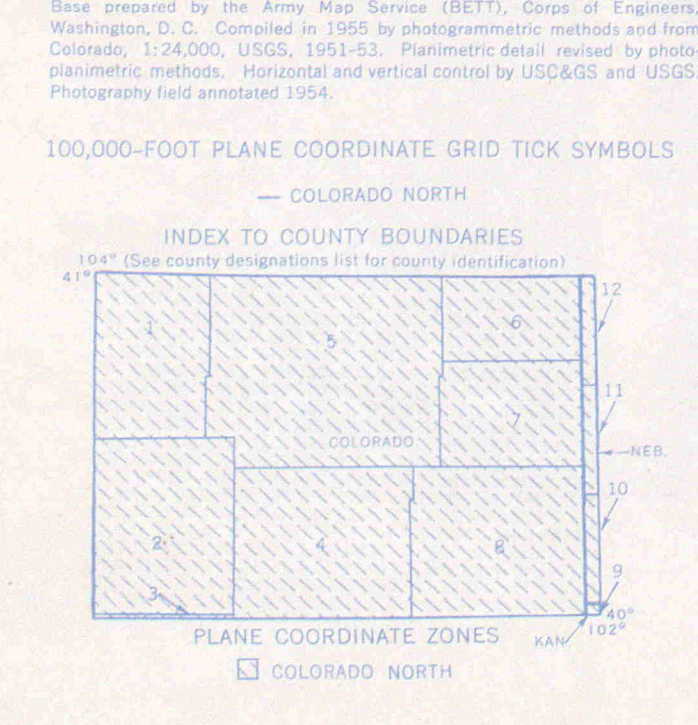
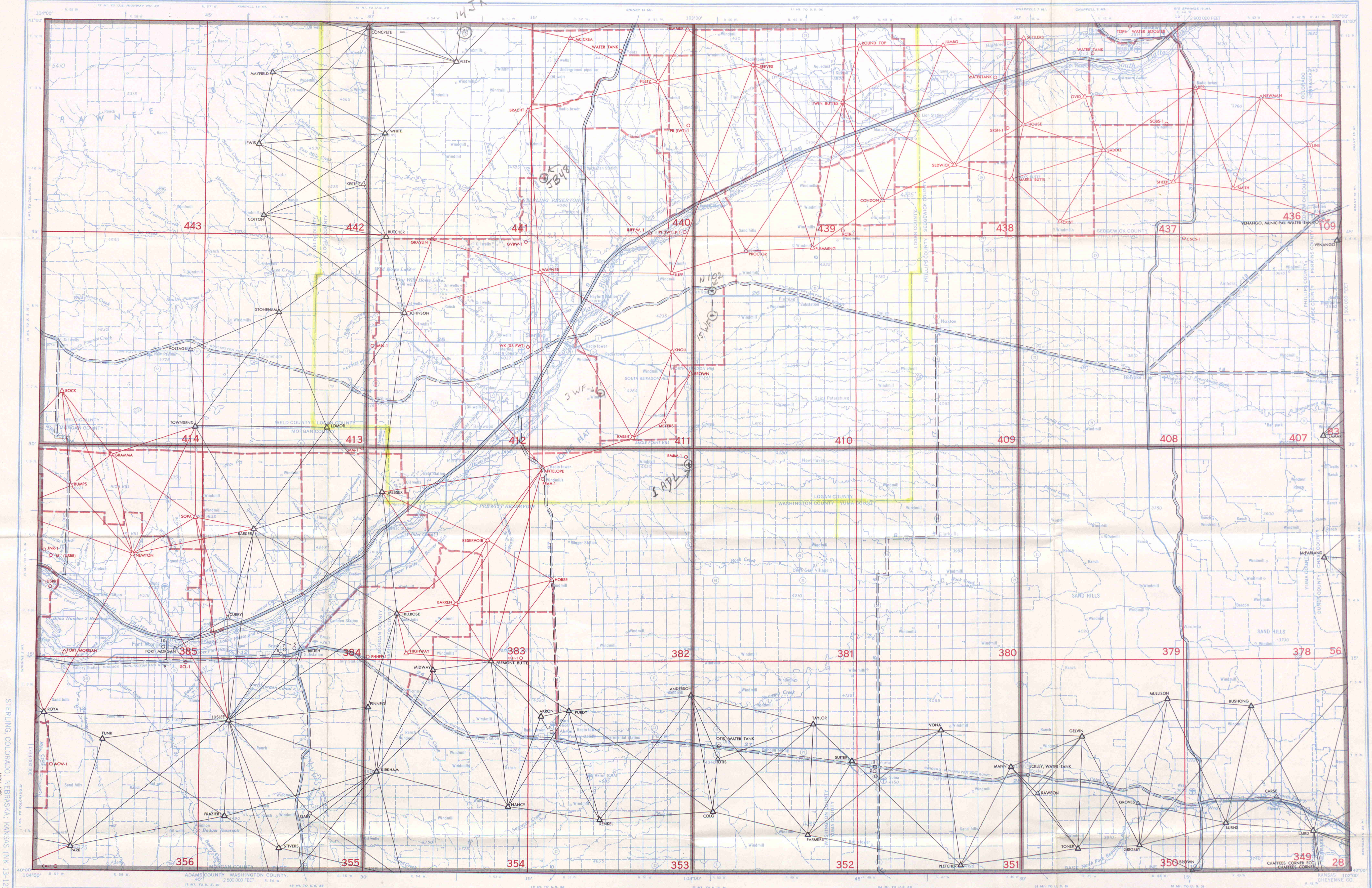


GEODETIC CONTROL DIAGRAM

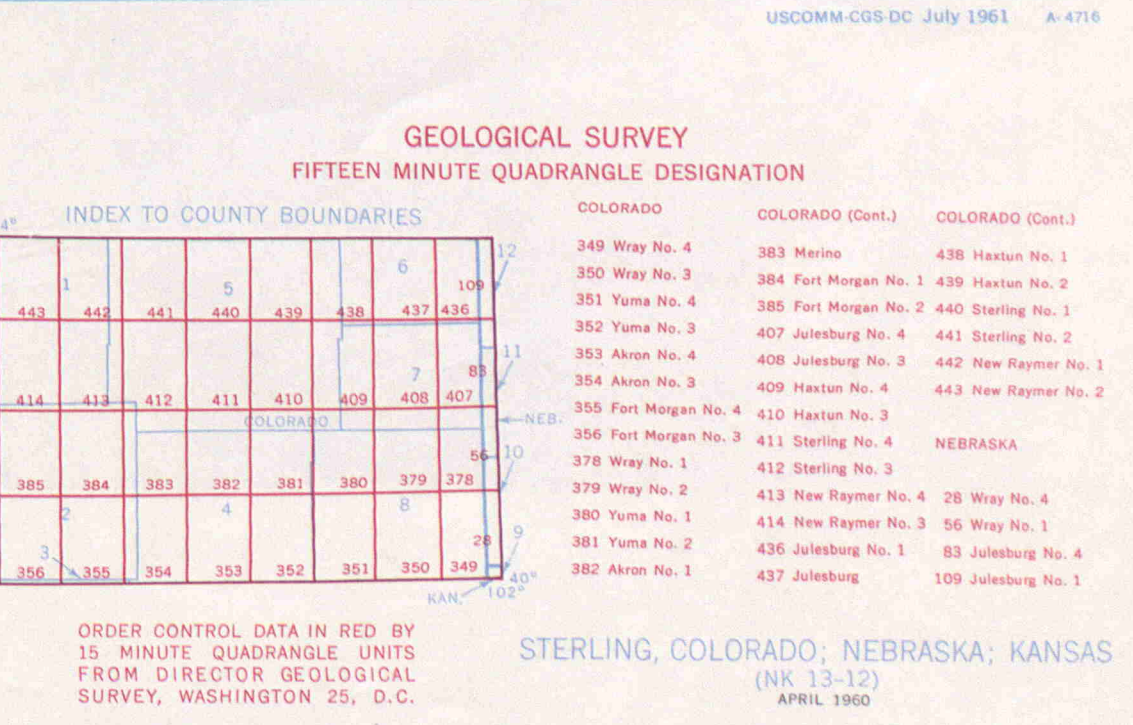
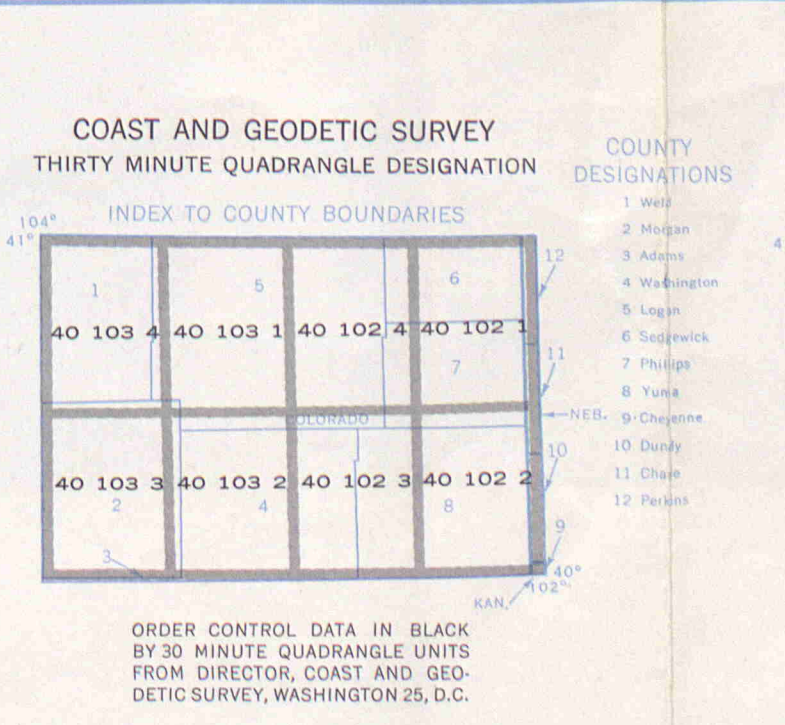
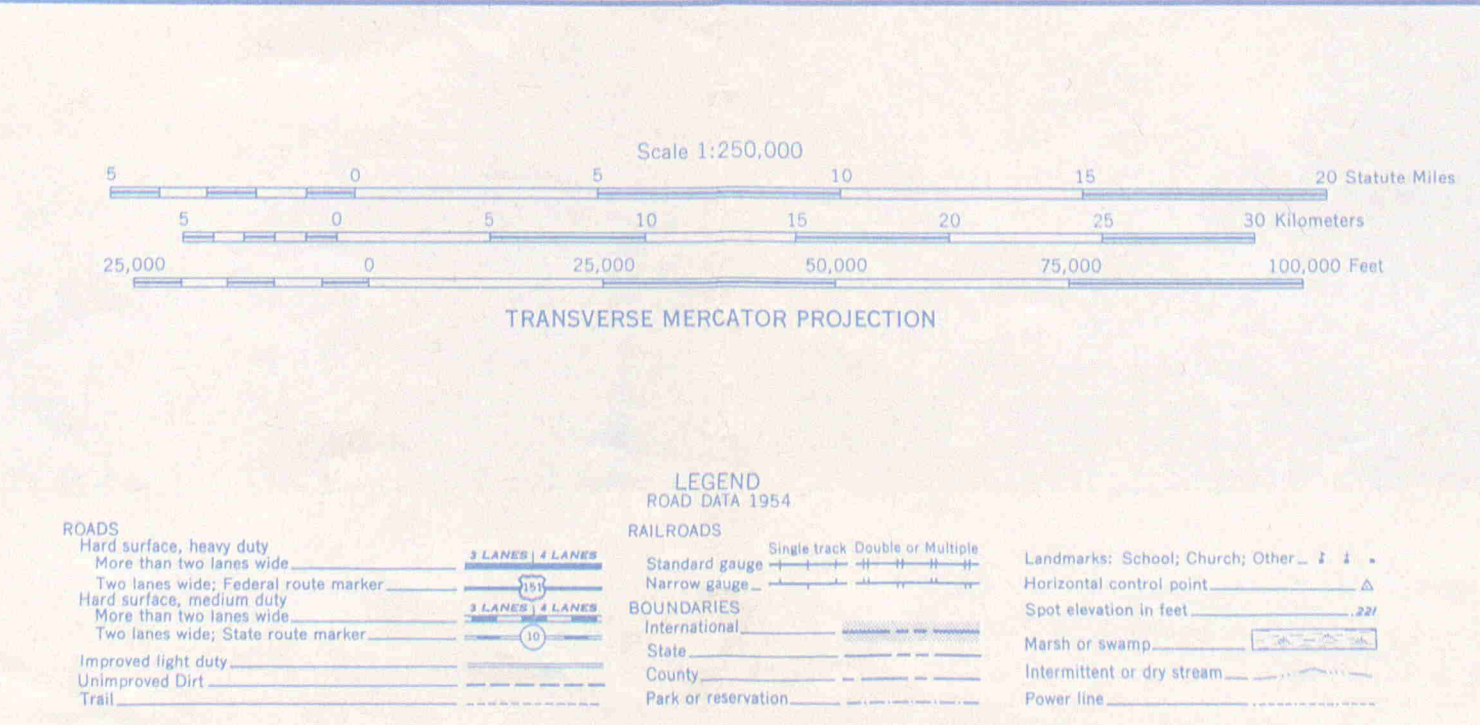


SECTIONIZED TOWNSHIP

6	5	4	3	2	1
7	8	9	10	11	12
13	14	15	16	17	18
19	20	21	22	23	24
25	26	27	28	29	30
31	32	33	34	35	36

LOCATION DIAGRAM FOR NK 13-12

- COAST AND GEODETIC SURVEY
- △ FIRST ORDER TRIANGULATION
 - △ SECOND ORDER TRIANGULATION
 - THIRD ORDER TRIANGULATION
 - STATIONS NOT RECOVERED ON LAST RECOVERY REPORT FOR NAMES OF NUMBERED STATIONS SEE SEPARATE INDEX
 - MEASURED BASE
 - MEASURED LENGTH
 - FIRST ORDER LEVELING
 - SECOND ORDER LEVELING
 - THIRD ORDER LEVELING
- WASHINGTON
- 60
- GEOLOGICAL SURVEY
- △ TRIANGULATION
 - RECOVERABLE POINT
 - TRAVERSE
 - LEVELING
 - TRAVERSE AND LEVELING
 - ELECTRONIC CONTROL



INDEX TO COUNTY BOUNDARIES

1	2	3	4	5	6	7	8	9	10
11	12	13	14	15	16	17	18	19	20
21	22	23	24	25	26	27	28	29	30
31	32	33	34	35	36	37	38	39	40
41	42	43	44	45	46	47	48	49	50
51	52	53	54	55	56	57	58	59	60
61	62	63	64	65	66	67	68	69	70
71	72	73	74	75	76	77	78	79	80
81	82	83	84	85	86	87	88	89	90
91	92	93	94	95	96	97	98	99	100

U. S. DEPT. OF COMMERCE
 COAST AND GEODETIC SURVEY
 WASHINGTON, D. C.
 FORM - 6471 (1-63)
 DATE OCT 1964

INDEX TO NUMBERED HORIZONTAL CONTROL STATIONS

by the
 Coast and Geodetic Survey

QUADS 401021-2-3-4& 401031-2-3-4
 COLO-NEBR
 LATITUDE 40° 00' TO 41° 00'
 LONGITUDE 102° 00' TO 104° 00'
 DIAGRAM NK 13-12 STERLING

KEY NO.	STATION NAME	QUAD. NO.	STATION NO.
1	YUMA HIGH SCHOOL CHIMNEY	401023	1012
2	YUMA STANDPIPE	401023	1013
3	YUMA CB AND Q RAILROAD WATER TANK	401023	1010
3	YUMA CITY POWER PLANT STACK	401023	1011
4	AKRON CATHOLIC CHURCH SPIRE	401032	1012
4	AKRON COURTHOUSE DOME FLAGSTAFF	401032	1013
4	AKRON HIGH SCHOOL STACK	401032	1014
4	AKRON METHODIST CHURCH BELFRY	401032	1015
4	AKRON STANDPIPE	401032	1016
5	BRUSH SUGAR REFINERY CONCRETE STACK	401033	1016
5	BRUSH SUGAR REFINERY WATER TANK	401033	1017
6	BRUSH ELEVATOR CO ELEVATOR	401033	1012
6	BRUSH STEEL STACK	401033	1015
7	BRUSH GRAMMER SCH BLDG YELLOW CHIMNEY	401033	1013
8	BRUSH MUNICIPAL WATER TANK	401033	1014
9	FORT MORGAN MUNICIPAL STANDPIPE	401033	1018
9	FORT MORGAN PLATTE VALLEY ELEV CO ELEV	401033	1020
10	FORT MORGAN SUGAR REFINERY WATER TANK	401033	1019

KEY NO.	STATION NAME	QUAD. NO.	STATION NO.
---------	--------------	-----------	-------------